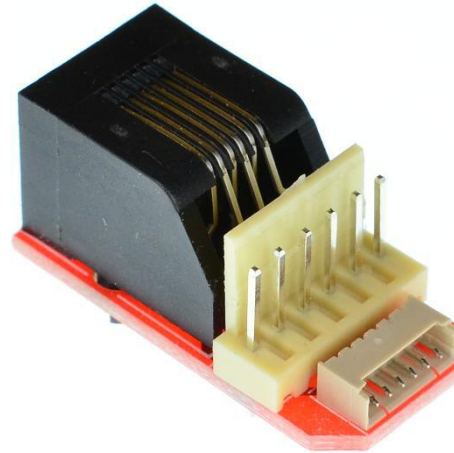


# PIC-TO-ICSP-V1B



## 1. Description:

PIC-TO-ICSP-V1B is an adapter that allows you to interface the Microchip RJ-11 connector to 0.1" ICSP and 0.05" ICSP connectors. It is used to connect the Microchip MPLAB Programmers (Pickit1, Pickit2, Pickit3, ICD, ICD2, ICD3 and REAL ICE) to the ElabGuy PIC32 Development boards or to a standard bread board. Most of the Microchip PIC designs only require 5 pins for programming, therefore the PIC-TO-ICSP-V1B offers you 5 or 6 pins 0.1" ICSP connectors and 5 or 6 pins 0.05" connectors.



Examples of using the PIC-TO-ICSP adapter:

- Microchip MPLAB Programmers with RJ-11 connector to ElabGuy 5pins 0.05" ICSP PIC32 development boards
- Microchip MPLAB Programmers 0.1" ICSP connector to ElabGuy 5pins 0.05" ICSP PIC32 development boards
- Microchip MPLAB Programmers with RJ-11 connector to standard 0.1" bread board

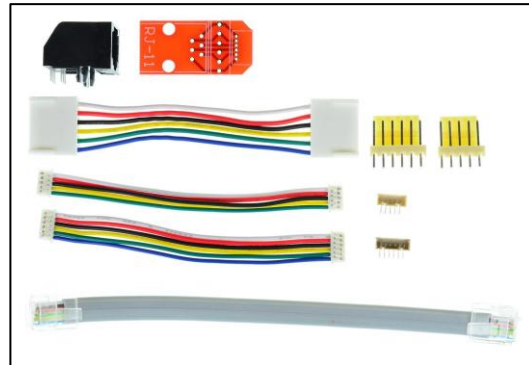


Figure 1: Parts inside the kit

Note: the module is not assembled, user can decide which connector to use on the module.

## 2. Features:

- PIC-TO-ICSP-V1B PCB
- Microchip RJ11 phone jack connector
- 5 pins 0.1"(2.54mm) ICSP connector
- 5 pins 0.05"(1.27mm) ICSP connector
- 6 pins 0.1"(2.54mm) ICSP connector
- 6 pins 0.05"(1.27mm) ICSP connector
- 5 pins 0.05"(1.27mm) ICSP cable
- 6 pins 0.05"(1.27mm) ICSP cable
- 6 pins 0.1"(2.54mm) ICSP cable
- 6pins RJ11 cable



Figure 2: Connecting the Microchip REAL ICE debugger with the PIC32-PLUG-IN-DEV